

Digital satellite antenna with control panel

MobilSat⁺



Mounting instructions

Models MSP-S / MSP-C

SUMMARY

1. Introduction.....	2
2. Safety instructions.....	3
2.1. Proper use (for the intended purpose).....	3
2.2. Safety during installation work.....	3
2.3. Proper installation and safety.....	3
2.4. Adhesive sealant	4
2.5. Road Traffic Licensing Regulations	4
3. Certifications	4
4. Package contents	4
5. Unpacking and preparation	5
6. Mounting instructions	5
6.1. Selection of the mounting position	5
6.2. External unit space requirements	5
6.3. Mounting of the assembly plate	6
6.4. Mounting of the external system.....	7
6.5. Passing the cables through the roof	7
6.6. Cable installation inside the caravan.....	7
6.7. Power supply.....	7
6.8. Protection circuit.....	8
6.9. Cabling between control and command units.....	8
6.10. Connection to the satellite receiver.....	9
6.11. Installation menu.....	9
7. Technical data	12
8. Notes	12
9. References.....	12

1. Introduction

Read carefully and completely this manual at least once before starting with mounting operations.

ATTENTION
**The antenna and the control panel must be
mounted only by qualified personnel**

In order to prevent danger during mounting operations, during normal operation and during vehicle moving, please observe carefully the information provided in this manual.

The correct execution of the mounting operations and a correct cabling of the system are fundamental prerequisites to guarantee conformity with related regulations.

The system is covered by CE brand and by a conformity declaration, as reported in Chapter 3.

2. Safety instructions

2.1. Proper use (for the intended purpose)

The MobiSat⁺ is designed to receive digital TV and radio programs via satellite. The turntable can be used to receive digital TV and radio signals in the frequency range from 10.70 to 12.75GHz.

Any use other than that specified above will void the warranty or guarantee.

The following circumstances result in the loss of all warranty and liability claims towards the manufacturer:

- Improper installation
- Use of non-specified mounting materials, which cannot guarantee the mechanical reliability of the antenna system
- Non-permissible use, e.g. use of the planar antenna for storage
- Structural changes or interference with the components and mounting accessories in the set, which could endanger both the mechanical and functional reliability
- Improper or forcible opening of the components
- Use of cleaners containing solvents, such as acetone, nitro-cellulose combination thinners, petrol etc.
- Failure to observe installation and safety instructions in this manual



The turntable may be operated in an ambient temperature range of -10 °C to +40 °C. Operating the system outside this range may result in malfunctions or damage to the system.

2.2. Safety during installation work



When carrying out installation work in locations where there is a risk of falling, take appropriate safety precautions, e.g. use of a working platform. Make sure that the vehicle roof is sufficiently strong and stable to carry out the installation work (risk of damage or collapsing of roof).

Make sure that:

- The turntable and connected units are disconnected from the power supply
- The person carrying out the installation or repair does not suffer from vertigo and can move around safely on the roof of the caravan or motor home
- The person carrying out the repairs is wearing sturdy and non-slip shoes
- The person carrying out the installation or repair has a secure position to stand and hold on while working
- The roof and the climbing equipment used (e.g. ladder) are dry, clean and non-slip
- The roof can withstand the weight of the person carrying out the repairs
- Nobody should be inside the caravan/motor home underneath the antenna during dismantling/installation

2.3. Proper installation and safety

A crucial safety factor is proper performance of installation and electrical connection work, and the specified alignment of the turntable in the direction of travel (park position), see also installation and connection. Follow as precisely as possible the installation conditions and steps described.

Modifications to the electrical installations in the vehicle should only be carried out by a specialist in vehicle electrics. Do not make any unauthorized changes to the turntable.

2.4. Adhesive sealant

The turntable is attached to the roof of the vehicle by adhesive and is secured by additional fixing screws. Note that the curing of the adhesive sealant is temperature-dependent. It reaches its full strength only after approximately five days.

2.5. Road Traffic Licensing Regulations

The applicable regulations must be observed in respect of fixed installation of the turntable on a vehicle which is driven on public highways.

In particular, §§ 19/2; 30 C; 32 (2) and the EC directive 74/483 EEC are applicable. Briefly, they state that no endorsement of the vehicle documentation is required unless the antenna unit causes the height of the laden vehicle to exceed 2mt, or the antenna unit projects beyond the outer lateral outline of the vehicle. The maximum permissible height of 4mt (vehicle and antenna unit) may not be exceeded.

3. Certifications

MobilSat⁺ complies with the following regulations:

Electromagnetic compatibility:	EN55022, EN55024
Safety:	EN12100-1, EN12100-2, EN294, EN349
IP graduation:	EN60529
Vibrations:	95/56/CEE

4. Package contents

The received package contains the following items:

- Control Unit
- External unit with antenna dish
- Command unit
- Mounting plate
- Power cable
- Cable set (4mt) for external unit
- Cable (5mt) for command unit
- Coaxial cable (1,5m) for satellite receiver
- Mounting instructions
- User's manual
- C.I. satellite receiver (with kit MSP-C)

5. Unpacking and preparation

Please keep original packaging material because it will be needed in case of system return for repair or maintenance actions. In other cases the supplier will not be responsible for damages occurred during transport.

Please keep packaging materials out of reach of children.

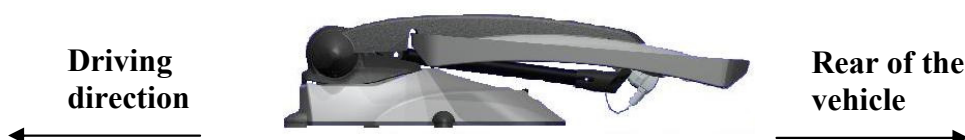
6. Mounting instructions

6.1. Selection of the mounting position

After all doubts concerning roof stability have been eliminated and after all necessary measures have been taken in order to assure a proper and safe assembly, position the external unit and the antenna in the planned mounting position.

Once positioned, both antenna and LNB must be oriented towards the rear of the caravan, opposite to driving direction. All other positions are considered not correct (see figure)

For the final choice of the mounting position, be absolutely sure of antenna space requirements during normal operations.

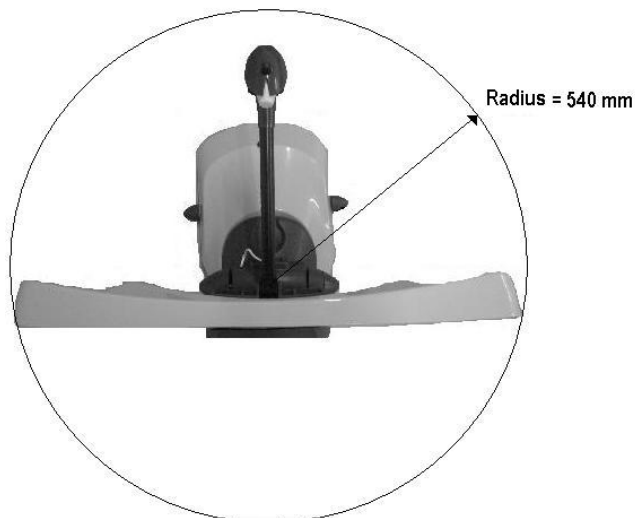


6.2. External unit space requirements

Be sure that there is enough space for the folded up system and for the complete rotation of the antenna. The space requirements for a correct mounting of the external unit are displayed in the following figure:



For a complete rotation of the antenna during the normal operation the roof of the vehicle must be free of obstacles, as displayed in the following figure.



NOTE

For difficult installations caused by space problems, it must be underlined that the plate and the LNB arm turns at a minimum height of 25 centimeters. Any obstacles present in the rotation area but lower than 25 cm will not influence normal antenna operations.

6.3. Mounting of the assembly plate

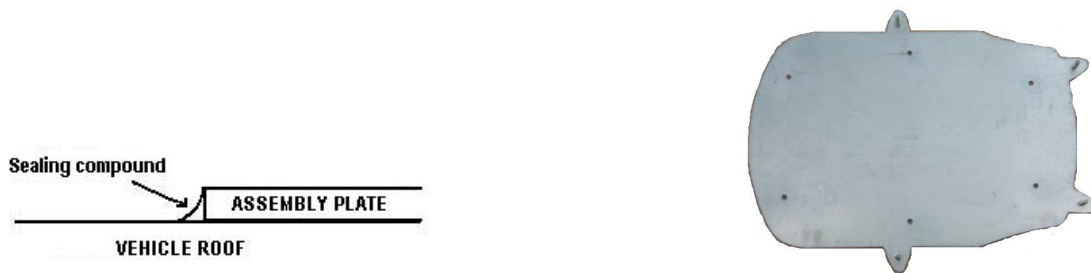
After having decided the mounting location and after having verified antenna positioning during stand-by time related to driving direction, mark on the roof the corner points of the mounting plate.

ATTENTION

It's absolutely needed to mark the roof of the vehicle with a line, in order to exclude the possibility to mount the assembly plate in a wrong direction. MobilSat⁺ antenna can be mounted in only one direction; LNB must be oriented towards the rear of the vehicle. All other positions will not be considered as correct and will cause immediate guarantee expiration.

Remove the system from the assembly plate unscrewing the four nuts. The assembly plate must be glued to the roof using a commercially available sealing compound. For the cleaning of the roof and the assembly plate use a special cleaning agent recommended by the manufacturer of the sealing compound (e.g. SikaFlex, Teroson 1K-Pur). After the sealing compound has been dried, apply the sealing compound to the bottom of the plate and strongly apply the plate to the roof of the vehicle. If the roof of the caravan does not have the needed consistency, fix the plate with the tapping screws, in order to obtain a stable and safe assembly. The manufacturer can not be indicated as responsible for damages caused by an incorrect mounting.

Seal also the edges of the assembly plate, as displayed in the following figure.



6.4. Mounting of the external system

Connect the cable set to the external unit. The cable can be plugged in the proper connector using the dedicated space in the lower part of the unit. After this, insert the cable in the small recess on the base of the plate and mount the external unit on the assembly plate, centering it on prisoners and fixing with the four M8 nuts and the related washers. When finished cover the nuts with the related covers. If the plate has been mounted correctly, now the LNB points exactly to the rear of the vehicle.

6.5. Passing the cables through the roof

To pass the cables through the roof use, if available, the system adopted by the manufacturer of the caravan. If no default manufacturers' system is available, install a cable through (available in package) with a diameter of at least 25mm.

Block the cable between the external unit and the cable through, in order to avoid movements that can cause cable wear or break.

Check carefully the point where cable pass through the roof and the strength of the blocking screws, if used.

6.6. Cable installation inside the caravan

- Lead the cables coming from the external unit toward the control unit
- Take care to cable fixing, in order to avoid oscillations - when the caravan is in motion. Such oscillations could damage or broke internal wires; along the route to the control unit fix the cable to the caravan walls using a commercially available cable fixing system.
- If the cable is too long, coil it up near the control unit, fixing it in an appropriate way.

6.7. Power supply

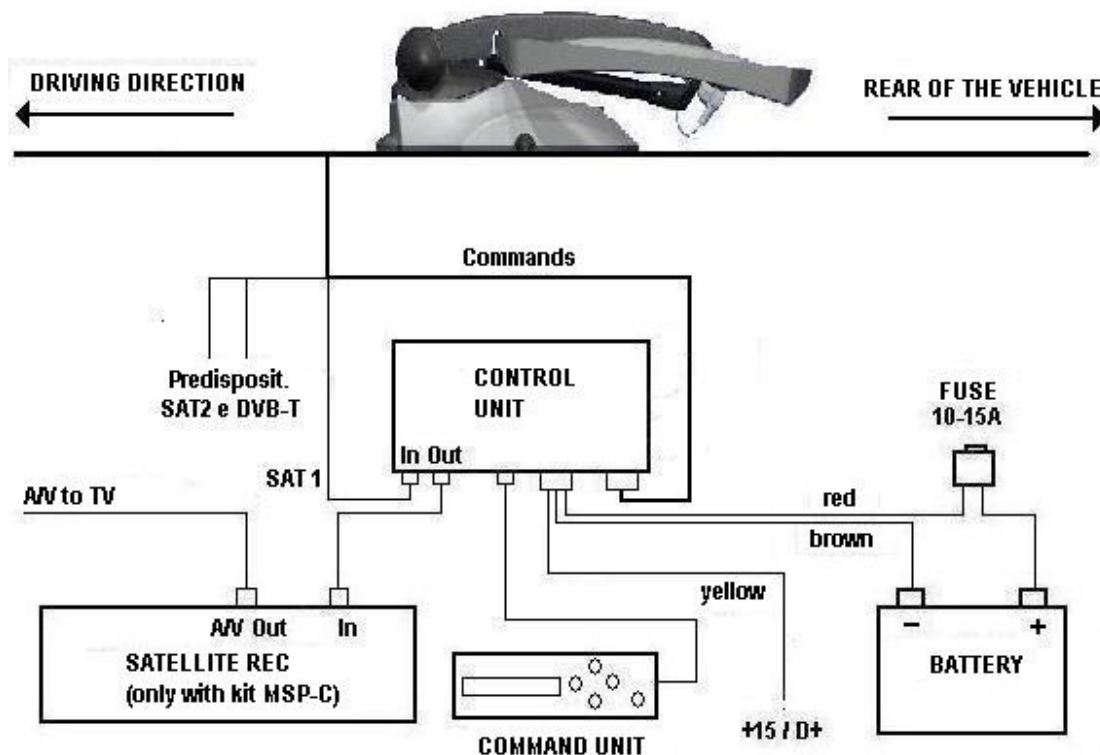
Provide a sufficient power to the system.

- The system must powered by a 12V power supply
- Connect the power cable directly to battery terminals, avoiding to use a cable that powers another utility. Often the cable section is not sufficient, to supply the original device (e.g. the television set) plus the new one. In these conditions the voltage that feeds the unit could not be sufficient. If this procedure is not applied the system could be damaged or not work in the appropriate way.
- The supply cable must have a section of at least 2.5mm². For distances of 6mt or more, cable section must be at least 4.0mm²
- The ideal solution is to install a new dedicated power line. **The protection fuse that must be installed on this line should be between 10A and 15A.**

Notes for power supply on trailers

Often trailers don't have a stable power supply, or they don't have a battery at all. In these cases it's necessary to power the system using a 220V/12V voltage transformer connected, directly to the main line. Do not use in any circumstance battery chargers, economic transformers or non-stabilized power packs. The voltage that feeds the system must be electronically stabilized and must have a nominal voltage of 13.8V, with a minimum nominal current of 6A.

In the following picture is displayed the electric diagram.



When the system has been connected correctly to a power supply, an auto test will be performed. If an error message appears on the display, look up the cause specified in the user manual.

6.8. Protection circuit

IMPORTANT

In order to avoid damages by inadvertently driving with the external unit folded-up, connect the yellow cable to the +15 vehicle line or the D+ line that carries voltage when the engine is on and no-voltage when the engine is switched off. In this way the external unit will be automatically retracted when the caravan engine will be switched on.

6.9. Cabling between control and command units

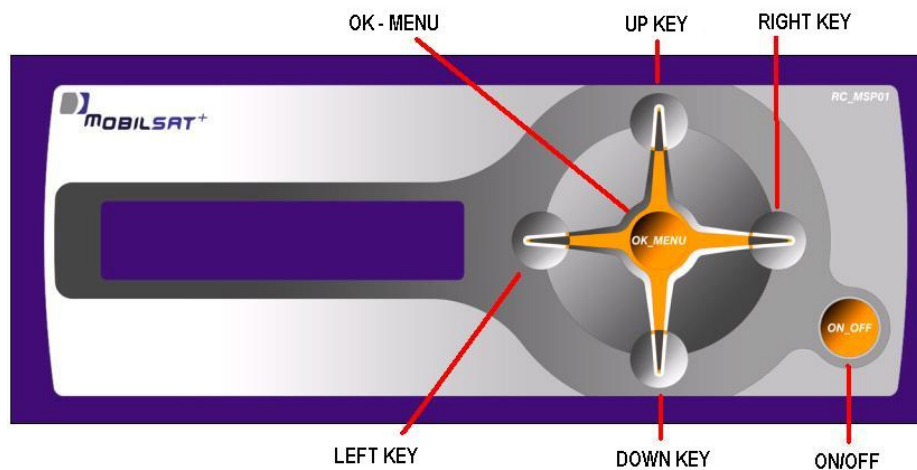
Connect the 5mt cable between the control and the command unit; take care of inserting the RJ11 connector in the right direction and push them until you hear a click. If the cable is too long, coil it up near the control unit, fixing it appropriately.

6.10. Connection to the satellite receiver

Now it's possible to connect the antenna system to the satellite receiver, using the F-connector cable.

6.11. Installation menu

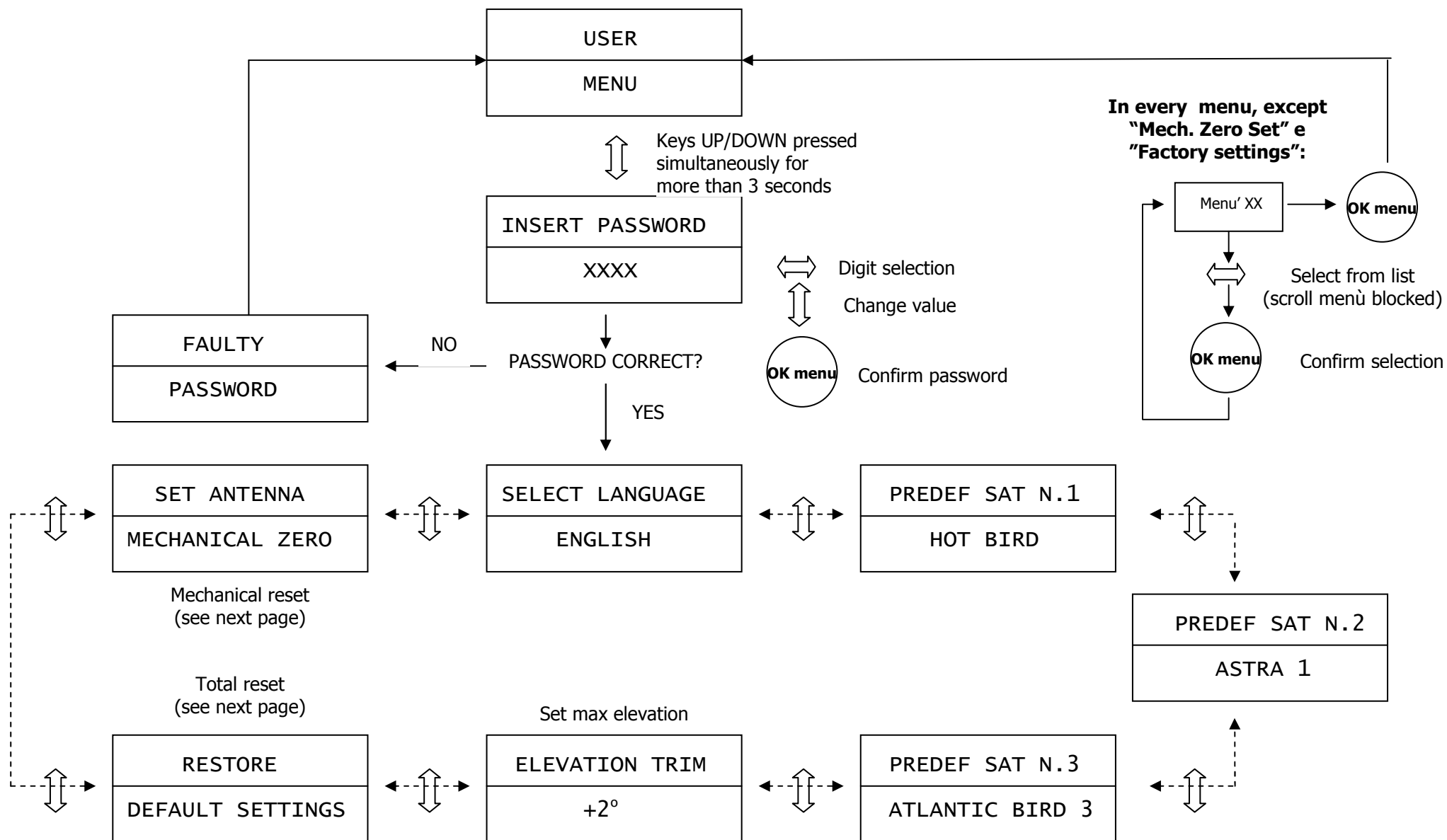
All the functions of the system are activated using the control panel, showed in the following picture.

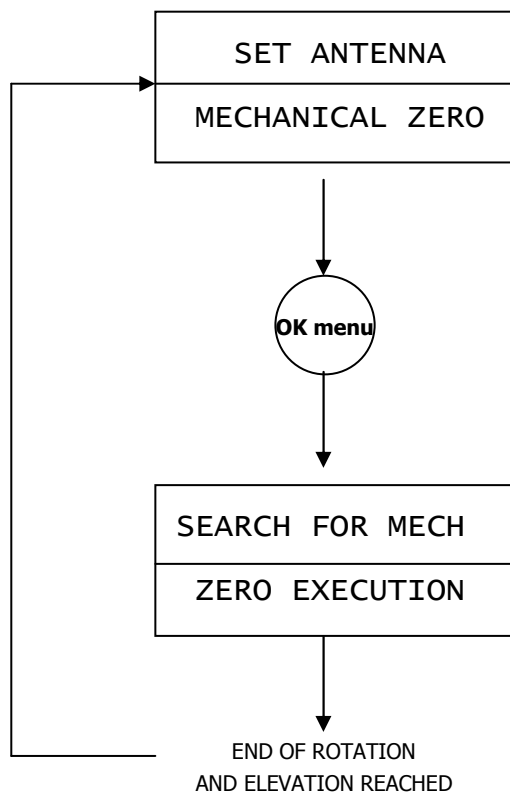


To activate operator menu press simultaneously the UP/DOWN keys for at least 3 seconds.

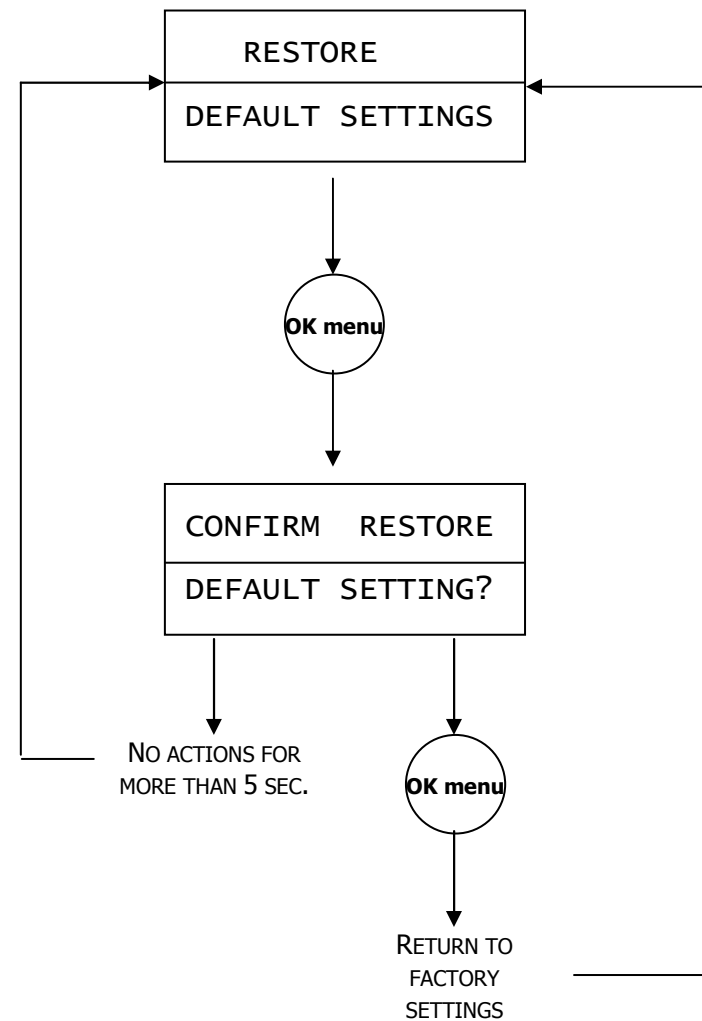
The system is password protected. To input password press UP/DOWN keys to modify the selected digit and LEFT/RIGHT keys to change the selected digit. The default password is 3105. After having inserted the right password it's possible to activate all the installation functions.

In the following pages are showed all the functions and menus needed for installation.





MOTORS ACTIVATED UNTIL END
OF ROTATION AND ELEVATION



7. Technical data

Power supply:..... 11/16V
Current consumption stand-by mode:..... 60mA
Current consumption during sat search:..... 2A typ - 3,5A peak
Typical time for sat search:.....30-60 sec
Max time for sat search:..... 300 sec
External unit weight:.....15,5Kg

8. Notes

9. References



Mobiltech s.a.s.
Via Brughetti, 9/E
20030 Bovisio Masciago (MI) - Italy
Tel: (+39) 0362 – 544.928
Fax: (+39) 0362 – 576.478
Internet: www.mobiltech.it
Mailto: info@mobiltech.it